

CABLE 389 RF: RF CABLE ASSEMBLY, I-PEX MHF 4L TO 1.13(GR) TO U.FL

SPECIFICATIONS:

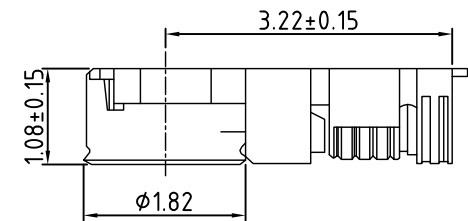
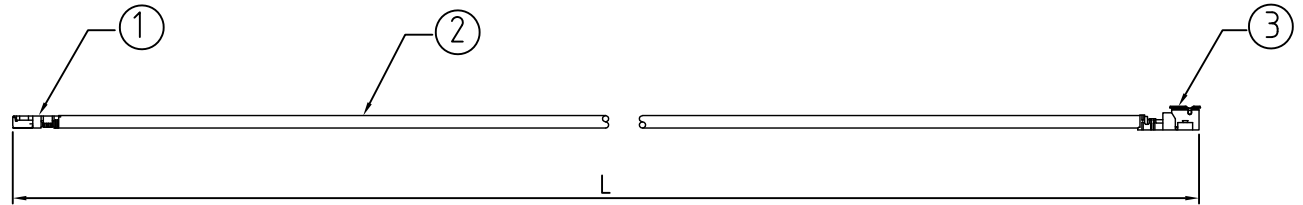
1. I-PEX MHF 4L PLUG, GOLD, P/N: 20565-001R-13
2. 1.13MM COAXIAL CABLE, COLOR: GRAY
3. HIROSE U.FL PLUG, GOLD, P/N: U.FL-LP-068

NOTES:

1. THE ORIENTATION OF CONNECTORS ON DRAWING IS FOR REFERENCE ONLY, IF THE ORDER IS LEFT BLANK THE CONNECTOR WILL NOT HAVE FIXED ORIENTATION.
2. FIXED ORIENTATION IS SUGGESTED FOR CABLE LENGTH 25MM TO 100MM. PLEASE SPECIFY THE FIXED ORIENTATIONS FROM THE ORDER CODE (F1, F2, ETC)
3. CONTACT GRAD CONN IF THE ORIENTATION YOU REQUIRE IS NOT SHOWN.
4. WORKING FREQUENCY RANGE: DC-6GHz
5. OPERATING TEMPERATURE: -40°C TO +90°C
6. IMPEDANCE: 50 OHM.

USAGE PRECAUTIONS: CABLES USING 'MICRO' COAX ARE DELICATE:

- (i) HANDLE WITH CARE.
- (ii) DO NOT TWIST; APPLY EXCESSIVE FORCES OR SHARP BENDS TO THE CABLE. DO NOT FORCEFULLY DEFORM WIRES.
- (iii) CONSULT CONNECTOR MANUFACTURER'S DATASHEETS FOR DETAILED NOTES ON HANDLING INSTRUCTIONS.



IPEX MHF 4L PLUG 8:1

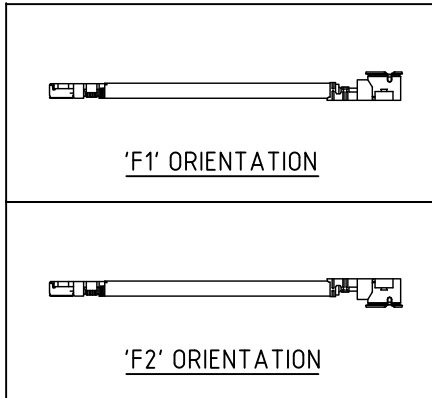
HOW TO ORDER

CABLE 389 RF - X X X - X X - X

"L" LENGTH IN MM  
 eg: 100MM = 100  
 (MIN. = 025, MAX. = 400  
 STANDARD = 100, 150, 200)  
 Tolerance: <50mm : ±2mm.  
 51-200mm: ±5mm.  
 201-400mm: ±7mm.

CABLE SIZE OPTIONS:  
 1 = Ø1.13MM CABLE, COLOR: GRAY.

ORIENTATION OPTIONS:  
 BLANK = DOES NOT HAVE A FIXED ORIENTATION  
 F1 = OPPOSITE ORIENTATION (L=25-220MM)  
 F2 = SAME ORIENTATION (L=25-220MM)  
 (SEE NOTES 1, 2, 3 AND DIAGRAMS FOR MORE INFORMATION)



Scale: NTS	THIRD ANGLE	Unstated .X .XX .XXX ANGLES	Tolerances: N/A N/A N/A	Material SEE NOTE	 www.gradconn.com	Type: Cable 389 RF
Drawn: CC						CABLE 389 RF
App'd: XXX	Title: CABLE ASSEMBLY	NOT TO SCALE				Drawing Number:
Date: 27 MAR. '20	Revision: 1.0	Unit: mm	THIS DRAWING IS CONFIDENTIAL AND MUST NOT BE COPIED OR DISCLOSED WITHOUT WRITTEN CONSENT			Sheet 1 of 1
						Drawing  E and O E